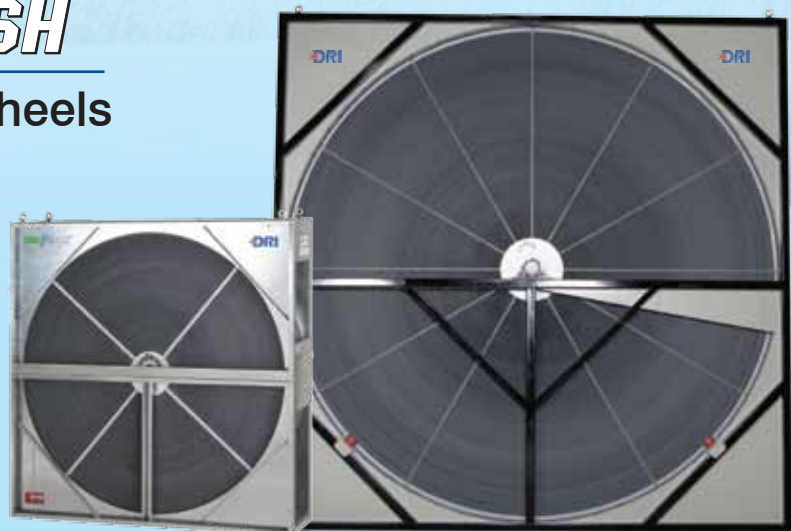


# ALL WHEELS RECOVERY ENERGY SOME DO IT BETTER...



F2 200 SERIES

**DRI™ ECO FRESH™**  
Energy Recovery Wheels



# Think Afresh...with F2 200 series !!

## Worldwide Memberships



### High Selectivity :

*EcoFresh* Energy Wheels *F2 200 series* use special, Selective Zeolite Desiccant coated on aluminum substrate and this results in high latent recovery and control on cross contamination.

### Aluminium Substrate :

The aluminium substrate eliminates any fire risks and results in high sensible recovery and high structural strength.

### In-built purge sector eliminates cross contamination :

Purge section provides strict separation of air flows, preventing carryover of bacteria, dust and pollutants from exhaust air to supply air. Purge section and sealing system limit cross contamination to 0.04% of the exhaust air concentration by volume.

### Non Contact Labyrinth seal :

- ✓ No wear and tear.
- ✓ Effective sealing.
- ✓ Long life.
- ✓ Brush seal for wheels upto 2200 mm.

### Structural Rigidity, Hardened Edges and Innovative Manufacturing Design :

- ✓ State-of-the-art winding technology and adhesives give *EcoFresh* rotors high structural strength.
- ✓ Wheel Edges hardened as standard to suit marine coastal application needs.

### Highly Polished Surface :

Vertical run out less than 1 mm per 1000 mm resulting in extremely low leakage across the central divider seals.

### Robust spoke Structure.

### Highest Recovery Efficiency Ratio (RER) in the industry

### Industry's highest recovery/performance :

- ✓ High Desiccant loading / coating.
- ✓ Nearly equal sensible and latent recovery, thus, comparatively higher total enthalpy recovery.
- ✓ Higher performance, low pressure drops.
- ✓ Laminar airflow due to thin aluminium substrate and uniform desiccant coating.
- ✓ Superior airflow characteristics.

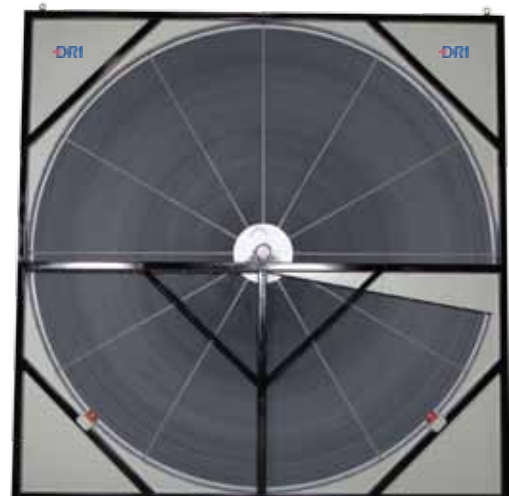
### Wide Range & Additional options :

- ✓ Total energy recovery (Enthalpy) and AHRI Certified sensible wheels.
- ✓ Customized Flute height and Rotor depth options.
- ✓ Cassette as well as Rotor options.
- ✓ Standard and Customized options.
- ✓ 500 mm to 5000 mm (dia.)
- ✓ Easy retrofit options.
- ✓ Segmented and Non Segmented options.
- ✓ Controls Package available.

# ECO FRESH™

Eurovent Certified

F2 200 SERIES



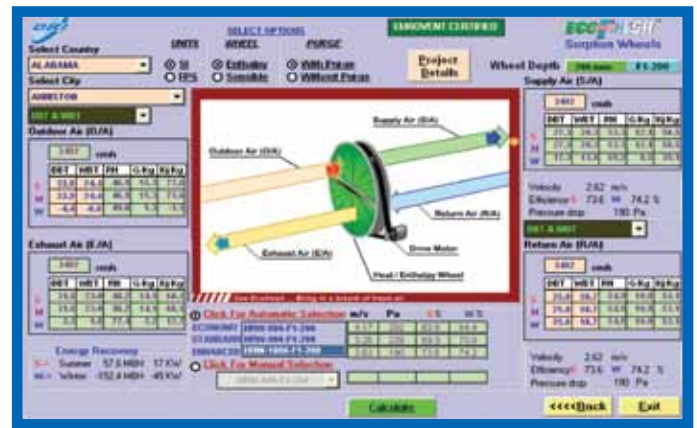
# State-of-the-art Test Facilities



## Why DRI ?

- ✓ Largest global producer of Enthalpy Wheels.
- ✓ #1 in performance... worldwide.
- ✓ First choice of Engineers and Consultants globally.
- ✓ Eurovent Certified Wheels.
- ✓ DRI also participates in the AHRI Certification Programme.
- ✓ Integrated Rotor manufacturing facility.
- ✓ World Class Rotor test facility) (Enthalpy as well as Desiccant).

## Selection Software Available



## Worldwide Presence



DRI has its Airineers spread out world over.

- |               |                |               |
|---------------|----------------|---------------|
| ✓ USA         | ✓ Canada       | ✓ Brazil      |
| ✓ Switzerland | ✓ Nigeria      | ✓ Philippines |
| ✓ UAE         | ✓ Saudi Arabia | ✓ Japan       |
| ✓ India       | ✓ China        | ✓ Malaysia    |
| ✓ Korea       | ✓ Vietnam      | ✓ Indonesia   |

## Fully Integrated Manufacturing Plant



# Some Prestigious Projects with



**Harmain Railways, KSA**



**Mall of Avenues, Kuwait**



**Dubai Sports City, UAE**



**Maine Healthcare, Scarborough, USA**



**Glorietta 1 & 2, Philippines**



**Eco Berrini, Brazil**



**Unilever Indonsa Riverhorse Valley, South Africa**



**Hanzhou Ali Baba, China**



**Al Ahmadi Police Head Quarters, Kuwait**



**Beijing Legendale Hotel, China**



**University of Michigan Lawyer's Club, USA**



**The Intermark Tower, Malaysia**

**DRI**  
Innovative Air Solutions

**DESICCANT ROTORS INTERNATIONAL Pvt. Ltd.**

**PAWA** GROUP  
Innovation is life

**DRI (INDIA)**  
100-101, Udyog Vihar, Phase-IV,  
Gurgaon 122015. INDIA  
Tel.: +91-124-4188888  
Fax: +91-124-4188800  
E-Mail: drimarketing@pawha.com

**DRI (KOREA)**  
135 926, Yeoksam e- Pyonhan  
Sesang, 107 Dong 503Ho,  
Yeoksamdong Kangnam Gu  
Seoul Korea  
Tel.: +82-2-4140629  
Fax: +82-2-4140639  
E-Mail: drikorea@hanmail.net  
Web: www.drikorea.co.kr

**DRI (USA)**  
1145, Fuller Lane /  
P.O. Box 1116, Cornville,  
Arizona (AZ) 86325, USA  
Phone: +1 (856) 693-6202,  
Email: spiccolo@driamerica.com  
Website: www.driamerica.com

**DRI (UAE)**  
P.O. Box No. 120672,  
Q3-106, SAIF-Zone,  
Sharjah, UAE  
Tel.: +971-6-5578148  
Fax: +971-6-5578149  
Email: enquire@dri.ae  
Website: www.bryair-mena.com

	Phone	Fax	E-mail	Website
<b>Malaysia</b>	+60-3-77259919	+60-3-77259957	bam@bryair.com.my	www.bryair.com.my
<b>China</b>	+86-21-51591555	+86-21-51591559	byairsh@bryair.com.cn	www.bryair.com.cn
<b>Philippines</b>	+632-8078435-37	+632-8078435	mail@bryair.com.ph	www.bryair.com/philippines
<b>BRAZIL</b>	+55-41-9841-3542		akumar@pawha.com	www.drirotors.com
<b>S. AFRICA</b>	+27-31-2027829	+27-31-2027849	drimarketing@pawha.com	www.bryair.com/afrika
<b>INDONESIA</b>	+62-21-79199023	+62-21-79199509	indonesia@bryair.com.my	www.bryair.com.my/indonesia
<b>VIETNAM</b>	+84-8-39956498	+84-8-39956497	vietnam@bryair.com.my	www.bryair.com.my/vietnam
<b>CANADA</b>	+ (514) 299-1131		vyeramian@driamerica.com	www.driamerica.com